

Zirkonzahn®



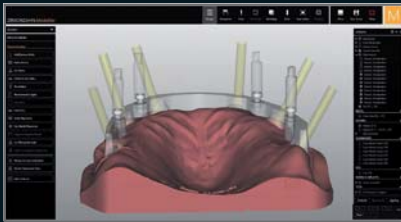
INTELLIGENT SOLUTIONS

The Zirkonzahn Culture

INTELLIGENT SOLUTIONS FOR DIVERGENT IMPLANTS

A bar-supported restoration is the best solution in cases of complete edentulism. However, due to various factors, this type of restoration is considered as one of the most difficult to realise, especially in cases of divergent implants.

To solve this problem, we have developed four solutions that strike a balance between function, stability and aesthetics, ensuring the fabrication of high-quality restorations even for edentulous patients with divergent implants.



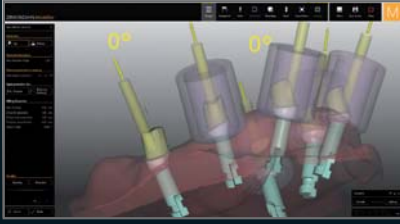
DOUBLE SCREW BAR

- *Special function where additional screw threads are created within the bar design with the Zirkonzahn.Modellier software*
- *Virtually generated screw channels are integrated in the bar during milling*
- *The bar is screwed to the implants and the secondary structure is screwed onto the bar*
- *Prevents non aesthetic vestibular screw channels*



BARTPLATTE

- *Innovative bar design that enables the production of aesthetic restorations despite palatal-inclined implants*
- *Through the advanced function of the CAD/CAM Bars software module in the Zirkonzahn.Modellier software, the bar is geometrically adapted to the palatal surface of the wax-up and individualised by means of the free-forming function*
- *The CAD/CAM Attachments software module enables the creation of further bar retentions*



INDIVIDUAL RAW-ABUTMENTS®

- Prefabricated abutment blanks made of high-quality medical titanium alloy (Ti-6Al-4V ELI according to ASTM F136 and ISO 5832-3) for the production of individual abutments
- Industrially prefabricated implant connection guarantees highest fitting accuracy
- Compensation for implant divergences thanks to the individual design of the abutment geometry; vestibular protrusion of the screw channels is prevented
- Can be anodised (e.g. gold-coloured) using the Titanium spectral-colouring Anodizer



TITANIUM BASES K80 ANGLED SCREW CHANNEL (ASC)

- Dispose of a high chimney to ensure optimal stability and force distribution; chimney height can be adjusted to tooth length
- Side opening that permits to tilt the screw access channel from 0° to 30° to compensate for non-optimal implant positions
- With or without anti-rotation connection and an additional anti-rotation device located on the chimney that prevents the cemented restoration from twisting
- All titanium bases from Zirkonzahn are also available in a high-quality gold plating, but alternatively, they can also be anodised in different colours using the Titanium spectral-colouring Anodizer



WATCH THE
VIDEOS



DOUBLE SCREW
BAR CASE
GALLERY



BARTPLATTE
CASE
GALLERY



RAW-ABUTMENTS®
CASE GALLERY



ORDER COMPONENTS
DIRECTLY IN
ZIRKONZAHN.MODELLIER



HIGH QUALITY BY ZIRKONZAHN

IMPLANT PROSTHETIC COMPONENTS – EVERYTHING FROM A SINGLE SOURCE
WITH UP TO 30 YEARS WARRANTY



White Metal Scanmarker:
For capturing the implants position and orientation during intraoral or model scans

Titanium Bases K80 Angled Screw Channel (ASC): The high chimney can be individually adapted to the tooth length and the screw access channel can be tilted from 0°–30°



Zirkonzahn LOC-Connector:
Snap attachment for implants and bars that is used for the fixation of removable dental prostheses on dental implants

Zirkonzahn Multi Unit Abutment 17°: Equipped with a 17° angle to compensate for any inclinations of the implants and available with two different anti-rotation connection types



Titanium Bases K85:
Can be individually adapted to the restoration thanks to their adjustable chimney

***NEW COMPONENTS FOR AN EVEN WIDER RANGE!**



ZIRKONZAHN LIBRARY DOWNLOAD CENTER

With the free *Zirkonzahn Library Download Center*, also exocad® and 3Shape users can download and manage in their design software all of Zirkonzahn's implant prosthetic components.

This is an international advertisement. Not all of the products mentioned are available in all countries. The product's field of application may vary depending on the country. Please contact your sales team for more information. All information is subject to change. Errors and omissions excepted. Version: 05/10/2022



WEAB3527EN=